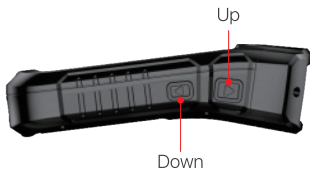




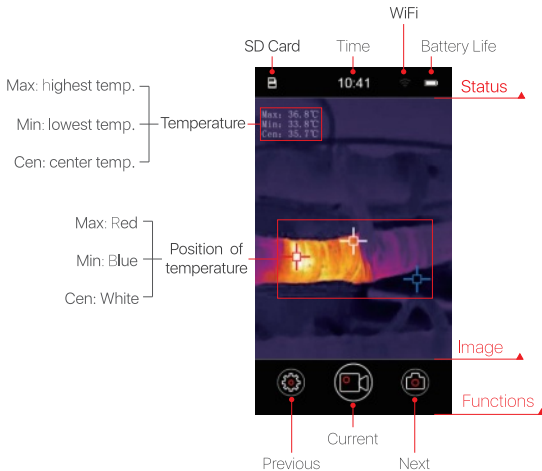
## Xview Infrared Thermometer



## Components



# Home Interface



# Functions

## 1. Switch On/Off

The camera will be switched on by pressing the **Power** Button for 4 seconds in the condition of camera off, then infrared image will be generated.

The camera will be switched off by pressing the **Power** Button for 4 seconds in the condition of camera on.

## 2. Switching Functions

Short Press **Up/Down** button to switch various functions circularly. An enlarged function icon in white colour can be seen from display after function switching.

Short press **Power** button to activate the selected function, the function icon will turn red.

Short press **Power** button again can return to main menu and close the selected function.

### 3. Video Recording

In video recording mode, short press **Up** button to start recording, then video recording timer appears at the left bottom of display, short press **Down** button to stop recording.

While recording, timer appears on the left bottom.



### 4. Photography

In the photography mode, short press the **Up/Down** button to take a photo.

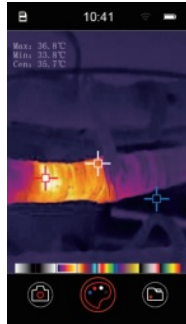


## 5. Color Palette

In the Color Pallete Mode, short press **Up/Down** button to switch the image mode among White Hot, Black Hot, Iron Red, Lava, Rainbow, Iron Grey, Red Hot and Rainbow 2 circularly.

Press **Up/Down** button to switch among 8 types of palette modes, press **Power** button to save and exit.

The 8 types of palette modes, from left to right, are: White Hot, Black Hot, Iron Red, Lava, Rainbow, Iron Grey, Red Hot and Rainbow 2.

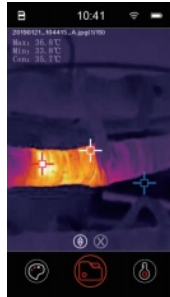


## 6. File Management

In File Management Mode, press **Up/Down** button to read photos and videos.

Short press **Power** button to select a photo or video, then short press **Up** button can delete a photo or video, short press **Down** button can play the video.

When the video is playing, short press **Down** button to Pause/Continue playing, press **Power** button to close video and back to file management mode.



## 7. Temp. Measurement Setting

Temp measurement switch, unit, ambient temperature, emissivity, distance and temp measurement range can be set or read in temp measurement setting mode.

- Short press **Up/Down** button to switch setting menu item.
- Then Short press **Power** button to select menu item and set parameters by short pressing **Up/Down** button.
- Short press **Power** button to save and exit .

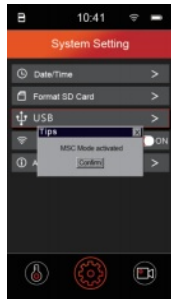
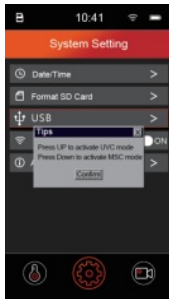
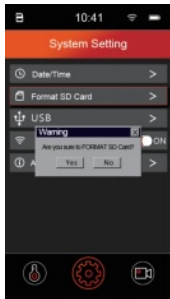




## 8. System Setting

Date/time, Format SD card, USB, WiFi and product info can be read and set in system setting mode.

- Short press **Up/Down** button to switch setting menu item.
- Then Short press **Power** button to select menu item and set parameters by short pressing **Up/Down** button.
- Short press **Power** button to save and exit .



## 9. Connect to PC

Connect camera to PC via Type-C cable, then 'Disk' and 'Charge' options can be seen from display.

- When 'Disk' is selected, the camera will be loaded as a removable disk on PC, the photos and videos can be read from this disk.

Video reading path: Disk\VIDEO-CIF \  
\*.mp4;

Photo reading path: Disk\PHOTO-CIF \  
\*.jpg

- Selecting 'Charge ' can charge camera.



## Specification

Product Name	Xview Infrared Thermometer
Resolution, pixels	256×192
NEDT, mk	≤60
Frame Rate, Hz	25
Measure Range, °C	-20~+120 (available extension -20~+400)
Measure Accuracy	±3°C or 3% (in extension)
UVC	Support
WiFi	Support
Storage	Build-in storage (Flash), optional TF Card, maximum 64GB
Dimension, mm	123×61×35
Weight, g	≤200
IO port	Type-C



**合肥英睿系统技术有限公司**  
**InfiRay Technologies Co., Ltd.**

电话/Tel: +86-400-998-3088

邮箱/Email: [sales@infiray.com](mailto:sales@infiray.com)

网 址/http: [www.iraytek.com](http://www.iraytek.com)  
[www.infiray.com](http://www.infiray.com)